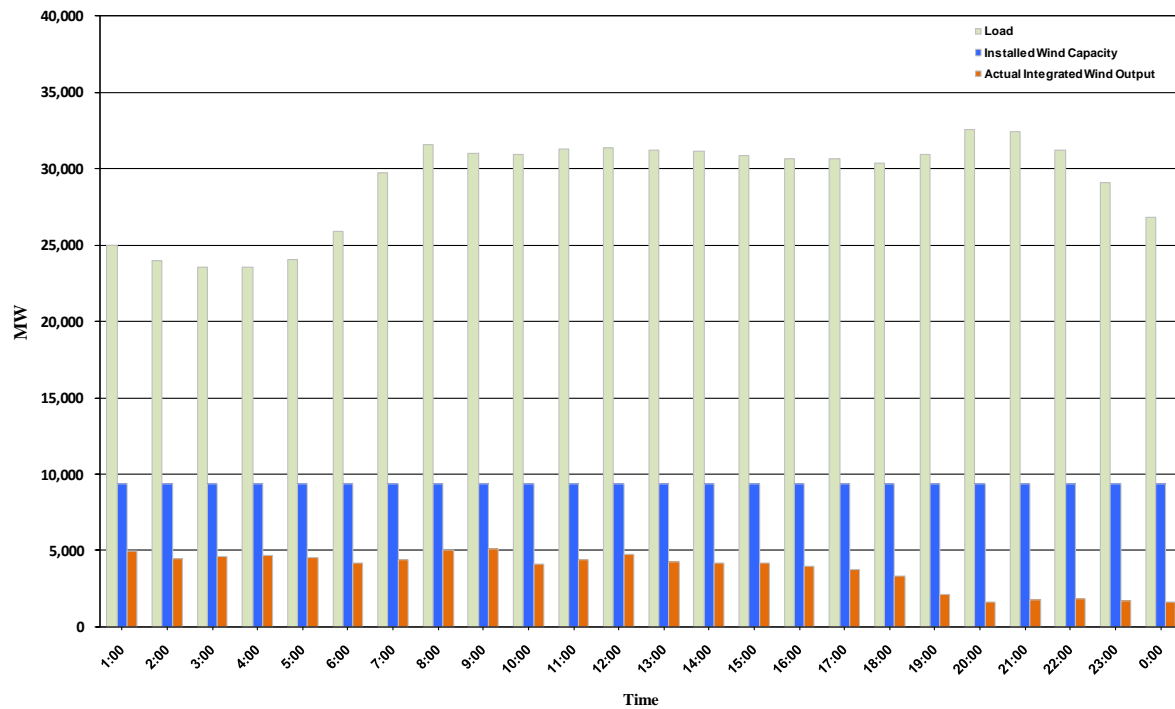




ERCOT Grid Operations Wind Integration Report: 11/04/10

Peak Load	32,587 MW
Load Peak Hour	20
Wind Record 06/12/10	7016 MW
Max Wind value	5348 MW
Wind Peak Hour	08:12:16
Wind Integration %	17.18

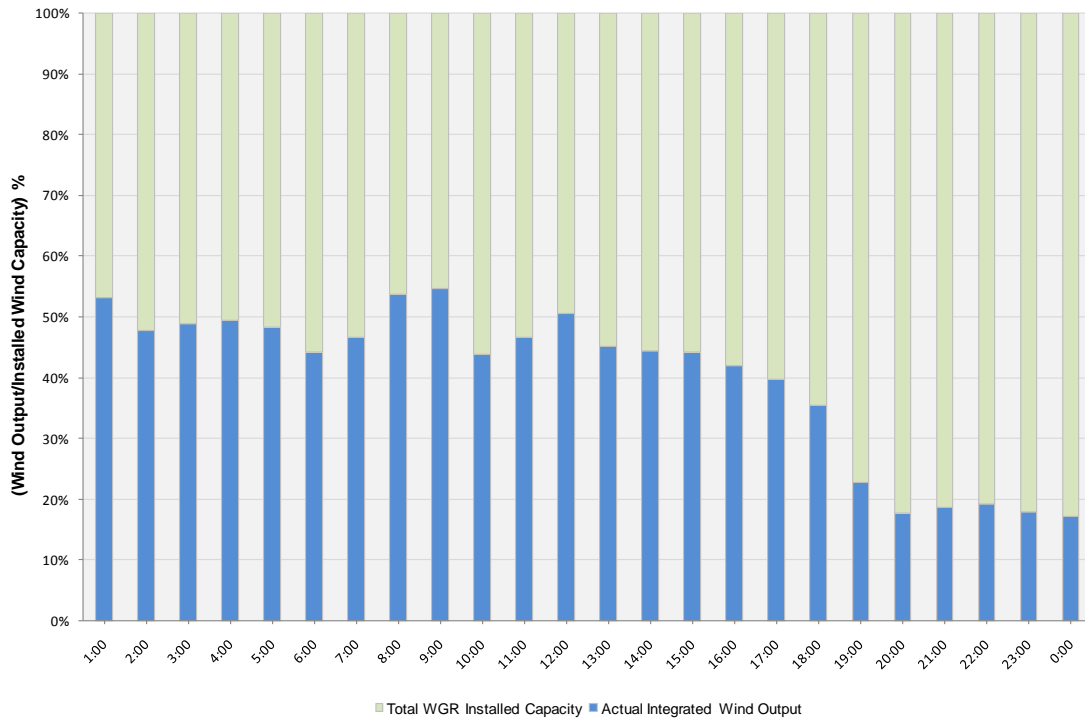
Hourly Average Actual Load vs. Actual Wind Output
11-04-2010





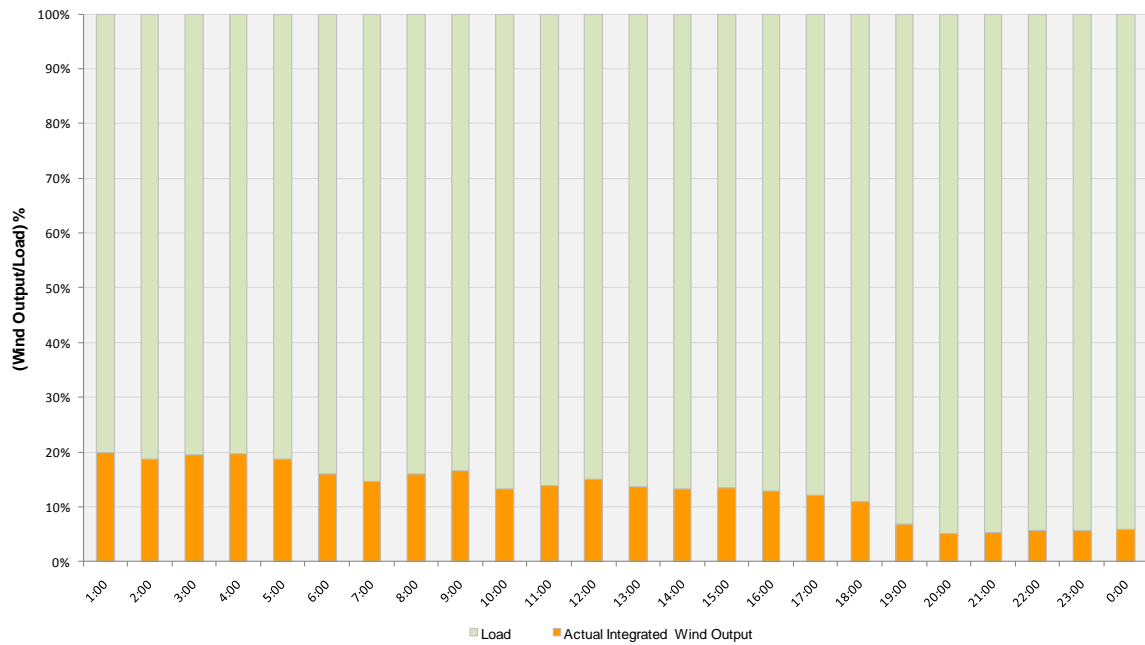
Actual Wind Output as a Percentage of the Total Installed Wind Capacity

11-04-2010



Actual Wind Output as a Percentage of the ERCOT Load

11-04-2010





ERCOT Load vs. Actual Wind Output 10/28/10 - 11/04/10

